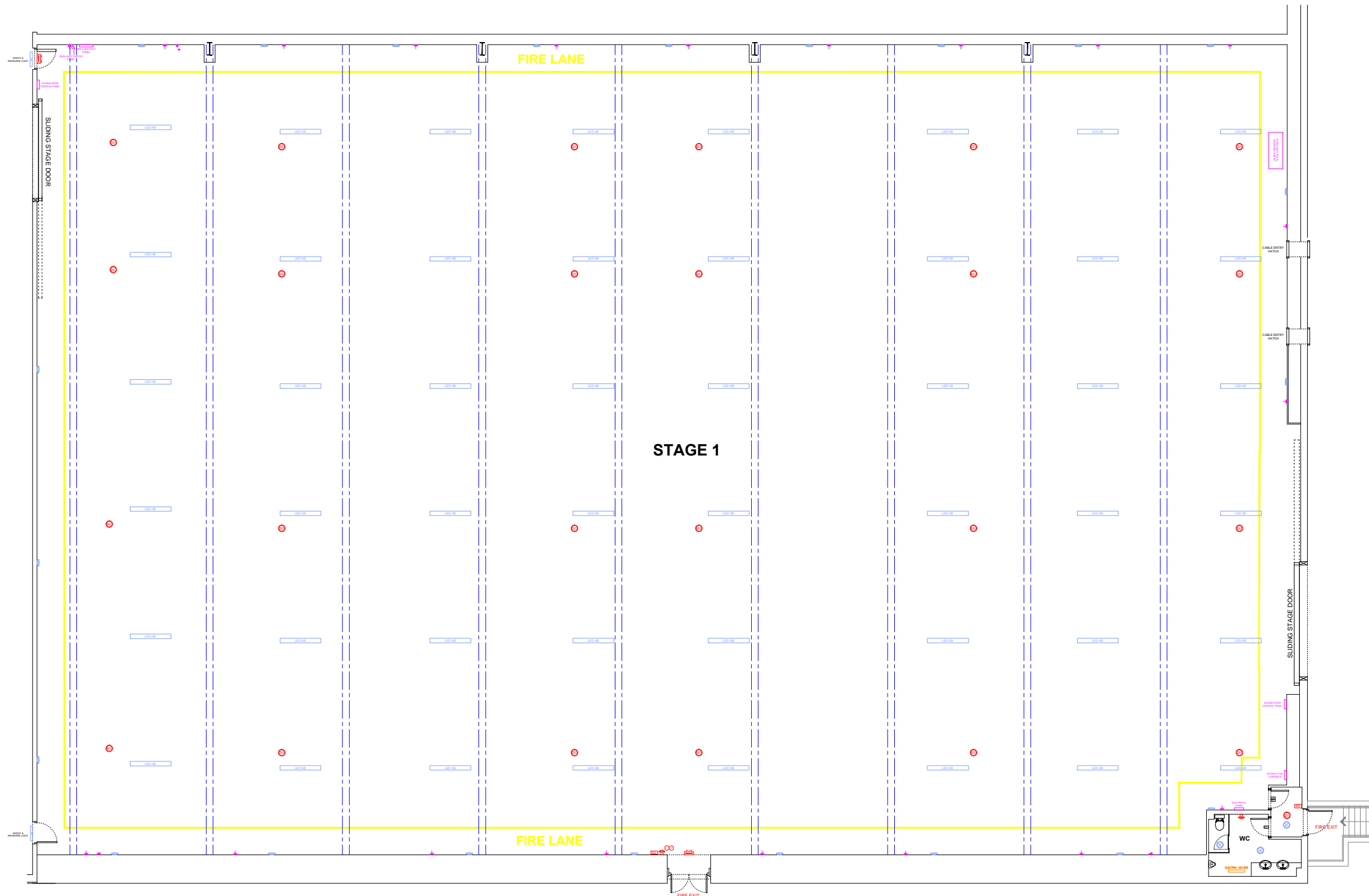


THIS DRAWING IS THE PROPERTY OF
 PINEWOOD GROUP LTD AND MUST NOT BE
 COPIED OR REPRODUCED IN WHOLE OR IN
 PART, BY ANY METHOD WHATSOEVER,
 WITHOUT PERMISSION OR THE WRITTEN
 AUTHORISATION OF PINEWOOD GROUP LTD

ALL DIMENSIONS TO BE CHECKED ON SITE
 PRIOR TO ANY COMMENCEMENT OF WORKS



LEGEND:	
	ELECTRICAL
	EXISTING SINGLE GANG LIGHT SWITCH
	EXISTING DOUBLE GANG LIGHT SWITCH
	EXISTING DOUBLE POWER SOCKET OUTLET
	SINGLE SWITCHED SPUR SOCKET
FIRE DETECTION	
	EXISTING SMOKE DETECTOR
	EXISTING SIREN GLASS CALL POINT
	EXISTING FIRE ALARM BELL (A&D)
	EXISTING EMERGENCY BULKHEAD LIGHT
	EXISTING DIRECTIONAL ILLUMINATED EMERGENCY EXIT LIGHT
	EXISTING DIRECTIONAL ILLUMINATED RUNNING MAN SIGNAGE
	EXISTING CO2 FIRE EXTINGUISHER
	EXISTING WATER FIRE EXTINGUISHER
	EXISTING FIRE HOSE REEL
	EXISTING EMERGENCY LIGHT TEST SWITCH
	EXISTING SMOKE DETECTOR ISOLATOR
LIGHTING	
	EXISTING WALL MOUNTED HOUSE LIGHT
	EXISTING CIRCULAR BULKHEAD LIGHT WITH EMERGENCY PACK
	EXISTING CIRCULAR BULKHEAD LIGHT
	EXISTING CIRCULAR WALL MOUNTED LIGHT WITH EMERGENCY PACK
	EXISTING WALL MOUNTED LIGHT
	EXISTING HIGH BAY STAGE LIGHTING
	EXISTING HIGH BAY STAGE LIGHT ATTACHED TO GANTRY HANDRAIL
	EXISTING GANTRY HOUSE LIGHTING 1000MM DOUBLE FLUORESCENT STRIP LIGHT
GANTRY LEVELS	
	MAIN STRUCTURAL BEAMS @ APPROX 2000MM WIDE
	RUNWAY BEAMS @ 1000MM WIDE
	TRANSFER SYSTEM LOCATION
	GANTRY WALKWAY

PROJECT MANAGEMENT DEPARTMENT

PROJECT
**WALES STUDIOS
 STAGE 1**

DRAWING TITLE
EXISTING GROUND FLOOR

SCALE	DATE	DRAWN BY
1:200 @ A3	01-10-13	SDM



STAGE 1 | EXISTING GROUND FLOOR WALES STUDIOS



STAGE 1 DIMENSIONS	
STAGE LENGTH	= 180' [55m]
STAGE WIDTH	= 116' [35.6m]
GROUND FLOOR AREA	= 20,880 ft² [1958m²]