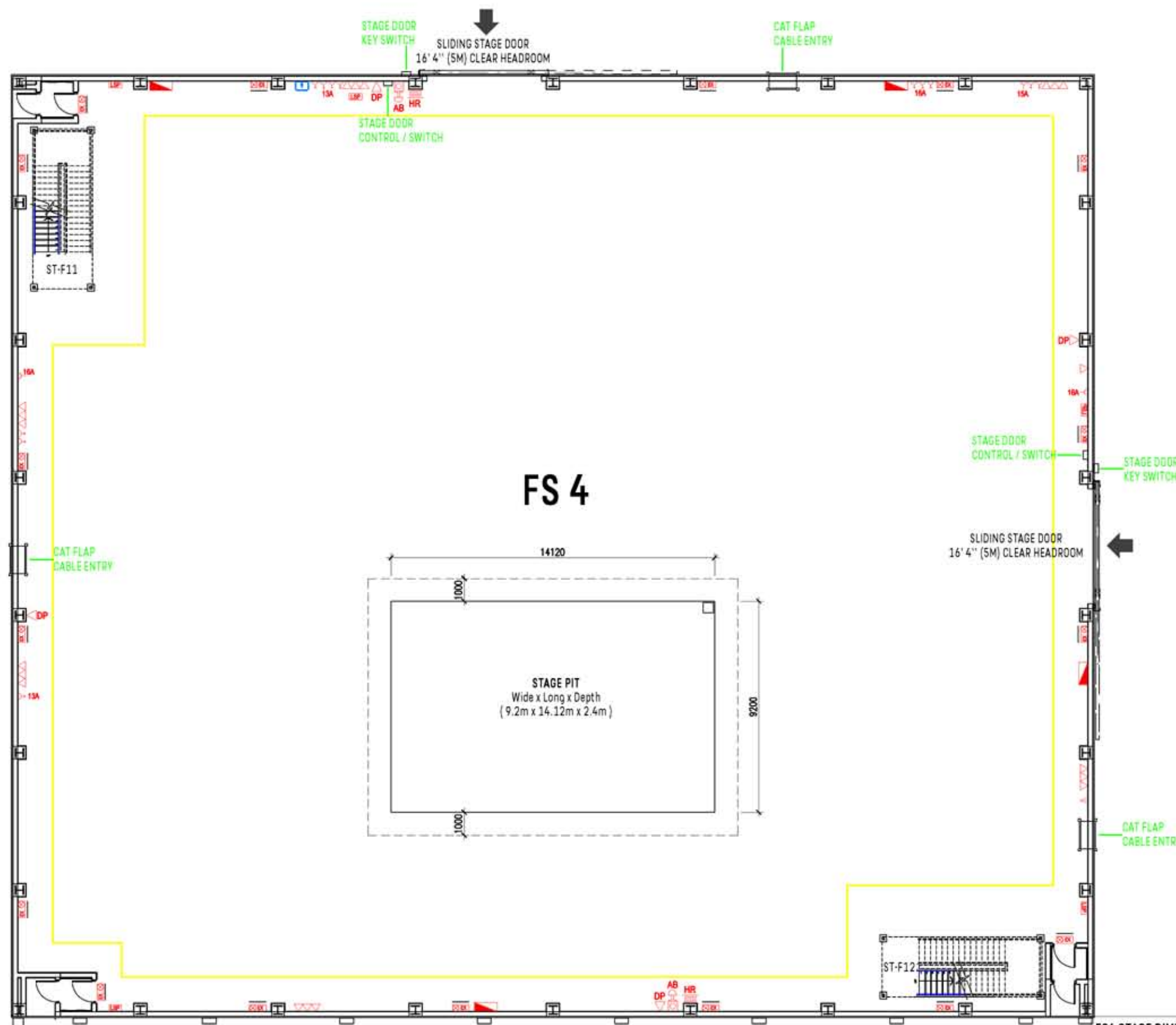
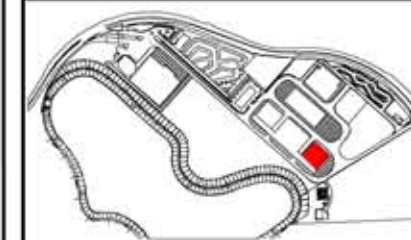


THIS DRAWING IS THE PROPERTY OF ISKANDAR MALAYSIA STUDIOS SDN. BHD. AND MUST NOT BE COPIED OR REPRODUCED IN WHOLE OR IN PART, BY ANY METHOD WHATSOEVER, WITHOUT PERMISSION OR THE WRITTEN AUTHORIZATION OF ISKANDAR MALAYSIA STUDIOS SDN. BHD.

ALL DIMENSIONS TO BE CHECKED ON SITE PRIOR TO ANY COMMENCEMENT OF WORKS



ELECTRICAL	
	ELECTRICAL DISTRIBUTION BOARD
	LIGHTING SWITCH PANEL
	SINGLE 13A GENERAL POWER OUTLET
	SINGLE DATA OUTLET
	15A POWER OUTLET
	16A POWER OUTLET
	EMERGENCY LIGHT
	HIGH BAY STAGE LIGHTING
	FLUORESCENT GANTRY LIGHTING
	M&E AIR CONDITIONING DUCTING
FIRE DETECTION	
	EXISTING SMOKE DETECTOR
	EXISTING BREAK GLASS CALL POINT
	EXISTING BREAK GLASS DOOR RELEASE
	EXISTING FIRE ALARM BELL
	EXISTING AUDIBLE WARNING SIREN
	EXISTING EXIT LIGHT
	EXISTING DIRECTIONAL EXIT LIGHT
	EXISTING CO2 FIRE EXTINGUISHER
	EXISTING DRY POWDER FIRE EXTINGUISHER
	EXISTING FIRE HOSE REEL
	EXISTING EMERGENCY LIGHT TEST SWITCH
	SPRINKLER FLOW SWITCH C/W VALVE
PLUMBING	
	BUTLER SINK
GANTRY LEVEL	
	RUNWAY BEAMS @ 146mm WIDE
	TRANSFER SYSTEM LOCATION
	GANTRY WALKWAY
	CAT LADDER
	SAFETY LINE

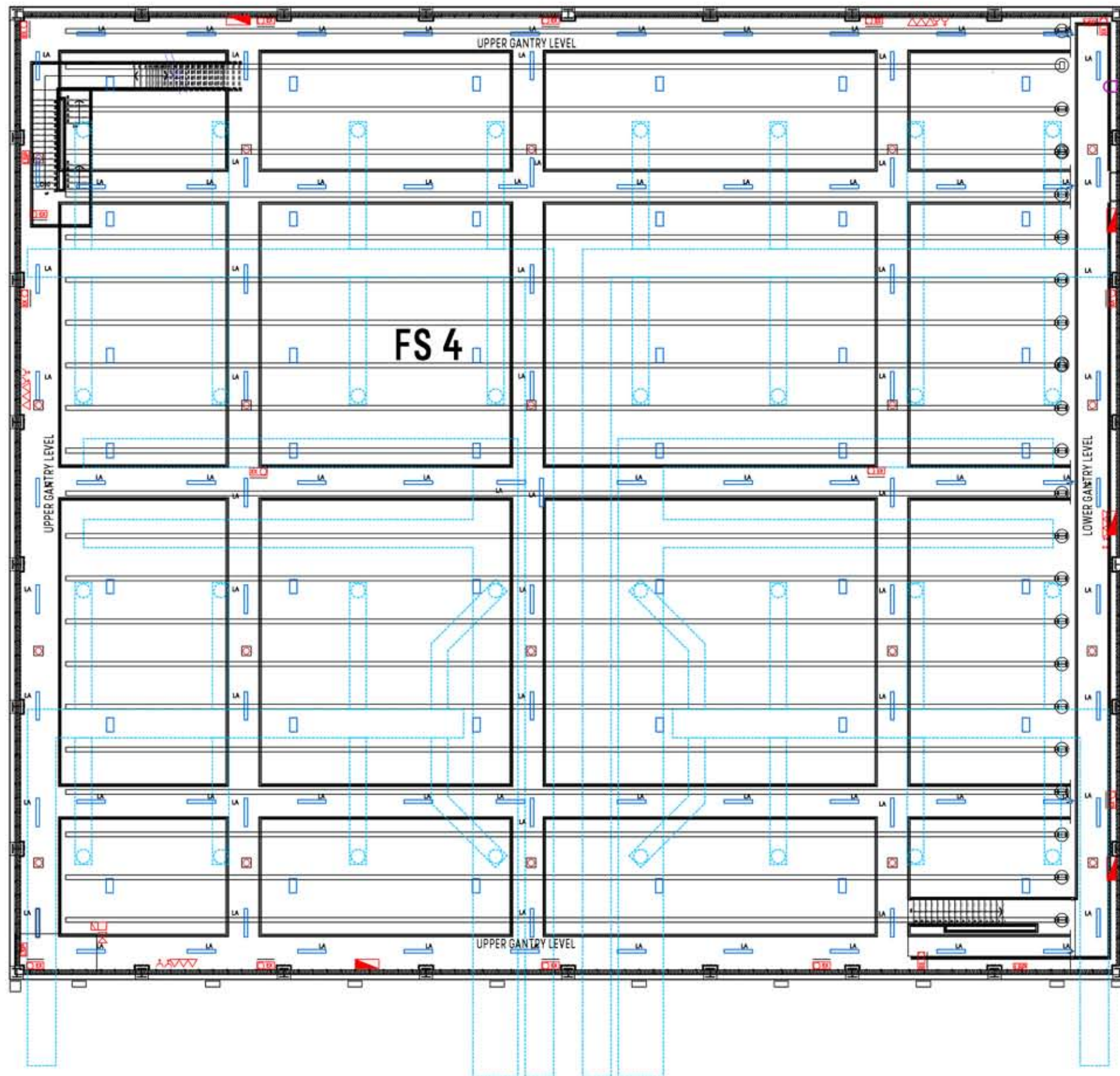
FACILITIES DEPARTMENT

PROJECT		
PINEWOOD ISKANDAR MALAYSIA STUDIOS		
DRAWING TITLE		
Film Stage 4 GROUND FLOOR PLAN		
Scale :	Date :	Update By :
1:200 @ A3	August 2017	Arkitek ZamryZ

FS4 STAGE DIMENSIONS	
STAGE LENGTH	= 151' 9" (46.27m)
STAGE WIDTH	= 131' 9" (40.18m)
STAGE PIT AREA	= 1,356 sq.ft. (126 sq.m.)
GROUND FLOOR AREA	= 20,000 sq.ft. (1858 sq.m.)
HEIGHT TO U/S OF GANTRY	= 44' 11" (13.7m)
FS4 IMPOSED LOADING	
IMPOSED FLOOR LOADING	= 10kN per sq.m.
IMPOSED FLOOR LOADING ON PIT COVER	= 4kN per sq.m.

FILM STAGE 4 - GROUND FLOOR LAYOUT PINEWOOD ISKANDAR MALAYSIA STUDIOS

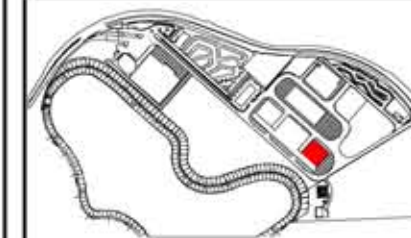




FILM STAGE 4 - GANTRY LEVEL LAYOUT
 PINEWOOD ISKANDAR MALAYSIA STUDIOS

THIS DRAWING IS THE PROPERTY OF
 ISKANDAR MALAYSIA STUDIOS SDN. BHD.
 AND MUST NOT BE COPIED OR REPRODUCED
 IN WHOLE OR IN PART, BY ANY METHOD WHATSOEVER,
 WITHOUT PERMISSION OR
 THE WRITTEN AUTHORIZATION OF
 ISKANDAR MALAYSIA STUDIOS SDN. BHD.

ALL DIMENSIONS TO BE CHECKED ON SITE
 PRIOR TO ANY COMMENCEMENT OF WORKS



- ELECTRICAL**
- ELECTRICAL DISTRIBUTION BOARD
 - LIGHTING SWITCH PANEL
 - SINGLE 13A GENERAL POWER OUTLET
 - SINGLE DATA OUTLET
 - 15A POWER OUTLET
 - 16A POWER OUTLET

- HIGH BAY STAGE LIGHTING
- FLUORESCENT GANTRY LIGHTING
- M&E AIR CONDITIONING DUCTING

- EXISTING BREAK GLASS CALL POINT
- EMERGENCY EXIT LIGHT
- SPRINKLER FLOW SWITCH C/W VALVE

- GANTRY LEVEL**
- RUNWAY BEAMS @ 146mm WIDE
 - TRANSFER SYSTEM LOCATION
 - GANTRY WALKWAY
 - CAT LADDER

**FACILITIES
 DEPARTMENT**

PROJECT
 PINEWOOD ISKANDAR MALAYSIA STUDIOS

DRAWING TITLE
 Film Stage 4
 GANTRY LEVEL PLAN

Scale :	Date :	Update By :
1:200 @ A3	August 2017	Arkitek ZamryZ

FS4 STAGE DIMENSIONS	
STAGE LENGTH	= 151' 9" (46.56m)
STAGE WIDTH	= 131' 9" (40.45m)
STAGE PIT AREA	= 1,356 sq. ft. (126 sq. m.)
GROUND FLOOR AREA	= 20,000 sq. ft. (1858 sq. m.)
HEIGHT TO U/S OF GANTRY	= 44' 11" (13.7m)
FS4 IMPOSED LOADING	
IMPOSED FLOOR LOADING	= 10kN per sq. m.
IMPOSED FLOOR LOADING ON PIT COVER	= 4kN per sq. m.

