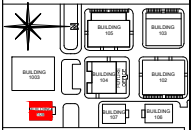


THIS DRAWING IS THE PROPERTY OF PINEWOOD ATLANTA LLC AND MUST NOT BE COPIED OR REPRODUCED IN WHOLE OR IN PART, BY ANY METHOD WHATSOEVER, WITHOUT PERMISSION OR THE WRITTEN AUTHORIZATION OF PINEWOOD ATLANTA LLC

ALL DIMENSIONS TO BE CHECKED ON SITE PRIOR TO ANY COMMENCEMENT OF WORKS

**PINEWOOD ATLANTA STUDIOS
SITE PLAN**

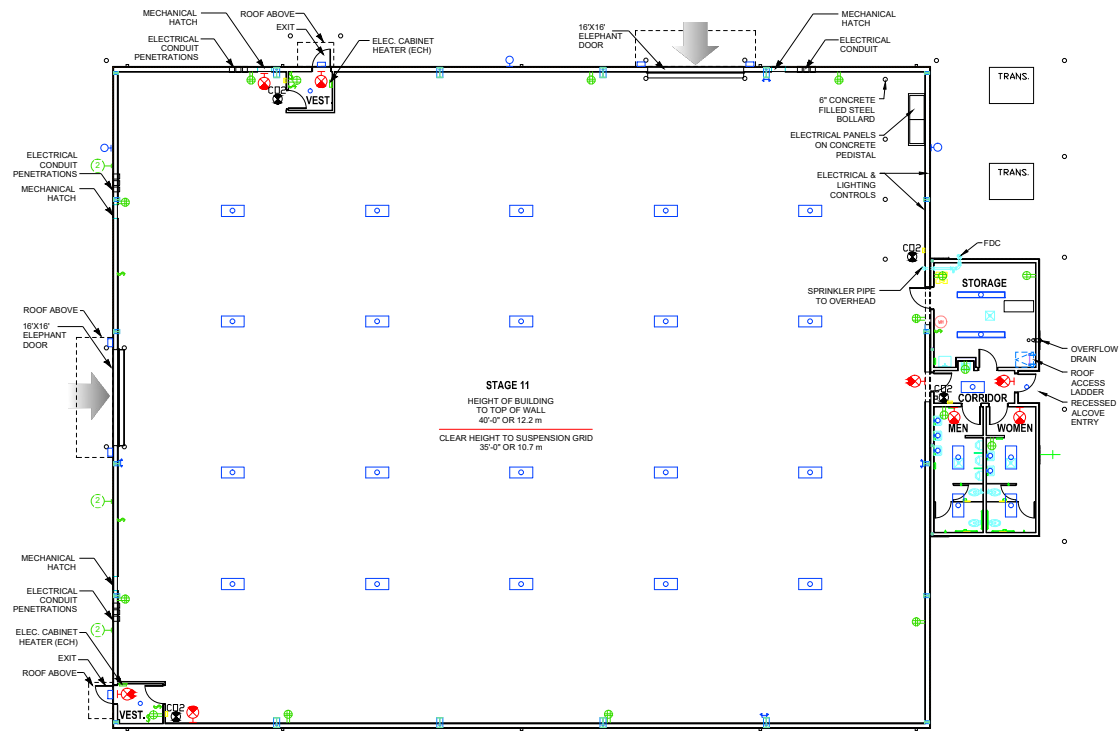


**PINEWOOD ATLANTA BUILDING 108
STAGE 11 DIMENSIONS**

STAGE LENGTH	=	136'-0" (41.5m)
STAGE WIDTH	=	110'-0" (33.6m)
CLEAR HEIGHT TO SUSPENSION GRID	=	35'-0" (10.7m)
GROUND FLOOR STAGE AREA	=	14,960 sq' (1389.8 m²)
GROUND FLOOR UTILITY AREA	=	837 sq' (78 m²)
TOTAL AREA	=	15,797 sq' (1467.8 m²)

LEGEND:

ELECTRICAL	
	DOUBLE DUPLEX RECEPTACLE
	ELECTRICAL CABINET HEATER
	EXISTING SINGLE POLE LIGHT SWITCH
	EXTERIOR RECEPTACLE
PLUMBING	
	EXTERIOR WALL HYDRANT
FIRE DETECTION	
	EXISTING PULL
	EXISTING STROBE HORN
	EXISTING STROBE
	EXISTING DIRECTIONAL ILLUMINATED EMERGENCY EXIT LIGHT
	EXISTING CO2 FIRE EXTINGUISHER
LIGHTING	
	EXISTING CEILING MOUNTED HOUSE LIGHT
	EXISTING CEILING MOUNTED HOUSE LIGHT
	EXISTING CEILING MOUNTED HOUSE LIGHT
	RESTROOM WALL LIGHTING
	EXISTING WALL MOUNTED EMERGENCY LIGHT
	EXTERIOR SITE LIGHTING
	EXTERIOR SITE LIGHTING



**BUILDING 108 STAGE 11 | EXISTING GROUND FLOOR LEVEL
PINEWOOD ATLANTA STUDIOS**

**PROJECT
MANAGEMENT
DEPARTMENT**

PROJECT PINEWOOD ATLANTA STUDIOS BUILDING 108 STAGE 11		
DRAWING TITLE EXISTING GROUND FLOOR LEVEL		
SCALE 1/32"=1'-0"	DATE APRIL 2015	DRAWN BY JLMC

