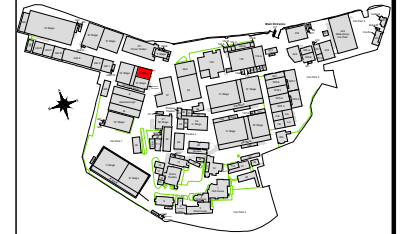


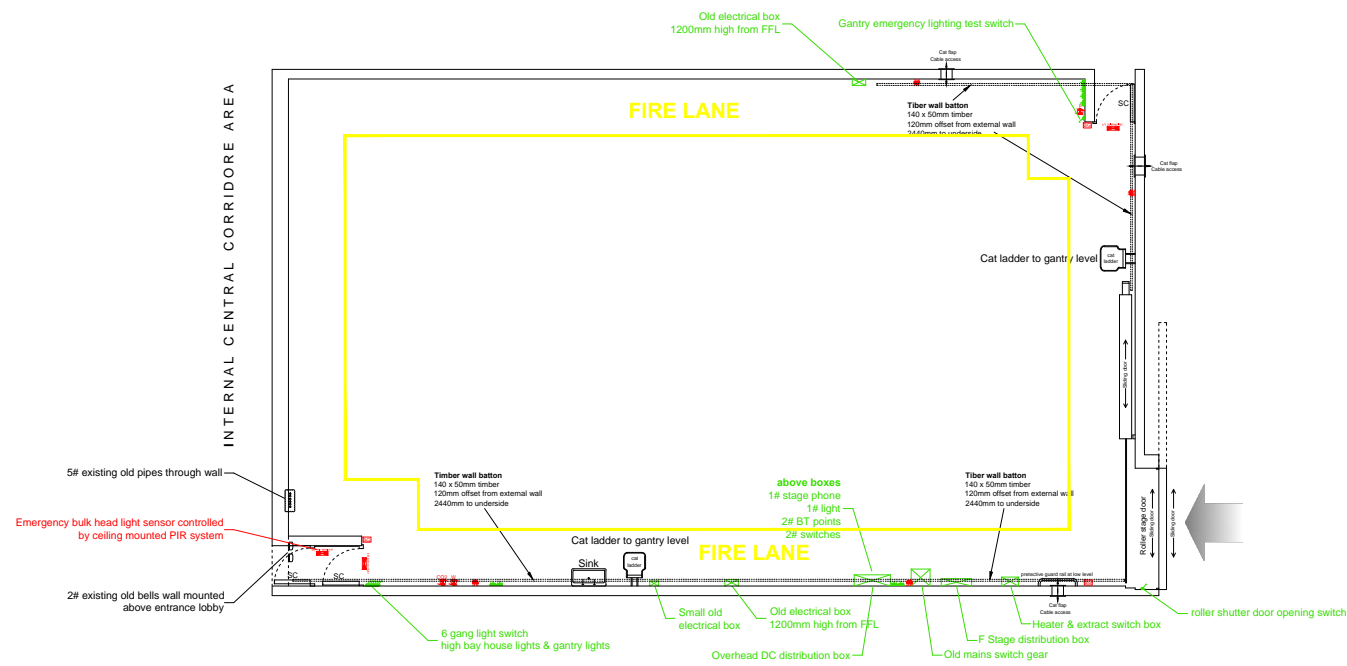
THIS DRAWING IS THE PROPERTY OF PINEWOOD GROUP LTD AND MUST NOT BE COPIED OR REPRODUCED IN WHOLE OR IN PART, BY ANY METHOD WHATSOEVER, WITHOUT PERMISSION OR THE WRITTEN AUTHORISATION OF PINEWOOD GROUP LTD

ALL DIMENSIONS TO BE CHECKED ON SITE PRIOR TO ANY COMMENCEMENT OF WORKS



SHEPPERTON STUDIOS SITE PLAN

LEGEND:	
	ELECTRICAL
	EXISTING SINGLE GANG LIGHT SWITCH
	EXISTING DOUBLE GANG LIGHT SWITCH
	EXISTING DOUBLE POWER SOCKET OUTLET
	SINGLE SWITCHED SPUR SOCKET
FIRE DETECTION	
	EXISTING SMOKE DETECTOR
	EXISTING BREAK GLASS CALL POINT
	EXISTING FIRE ALARM BELL (ARO)
	EXISTING EMERGENCY BULKHEAD LIGHT
	EXISTING DIRECTIONAL ILLUMINATED EMERGENCY EXIT LIGHT
	EXISTING DIRECTIONAL LUMINOUS RUNNING MAN SIGNAGE
	EXISTING CO2 FIRE EXTINGUISHER
	EXISTING WATER FIRE EXTINGUISHER
	EXISTING FIRE HOSE REEL
	EXISTING EMERGENCY LIGHT TEST SWITCH
	EXISTING SMOKE DETECTOR ISOLATOR
LIGHTING	
	EXISTING WALL MOUNTED HOUSE LIGHT
	EXISTING CIRCULAR BULKHEAD LIGHT WITH EMERGENCY PACK
	EXISTING CIRCULAR BULKHEAD LIGHT
	EXISTING CIRCULAR WALL MOUNTED LIGHT WITH EMERGENCY PACK
	EXISTING WALL MOUNTED LIGHT
	EXISTING HIGH BAY STAGE LIGHTING
	EXISTING HIGH BAY STAGE LIGHT ATTACHED TO GANTRY HANDRAIL
	EXISTING GANTRY HOUSE LIGHTING 1000MM DOUBLE FLUORESCENT STRIP LIGHT
GANTRY LEVEL	
	MAIN STRUCTURAL BEAMS @ APPROX 200MM WIDE
	RUNWAY BEAMS @ 100MM WIDE
	TRANSFER SYSTEM LOCATION
	GANTRY WALKWAY



F STAGE | EXISTING GROUND FLOOR SHEPPERTON STUDIOS



F STAGE DIMENSIONS	
STAGE LENGTH	= 73' 4" [22.4m]
STAGE WIDTH	= 43' 6" [13.3m]
GROUND FLOOR AREA	= 3,206 ft² [297.9m²]
HEIGHT OF STAGE	= 7m

PROJECT MANAGEMENT DEPARTMENT

PROJECT
SHEPPERTON STUDIOS
F STAGE

DRAWING TITLE
EXISTING GROUND FLOOR

SCALE	DATE	DRAWN BY
1:200 @ A3	01-10-13	SDM

