

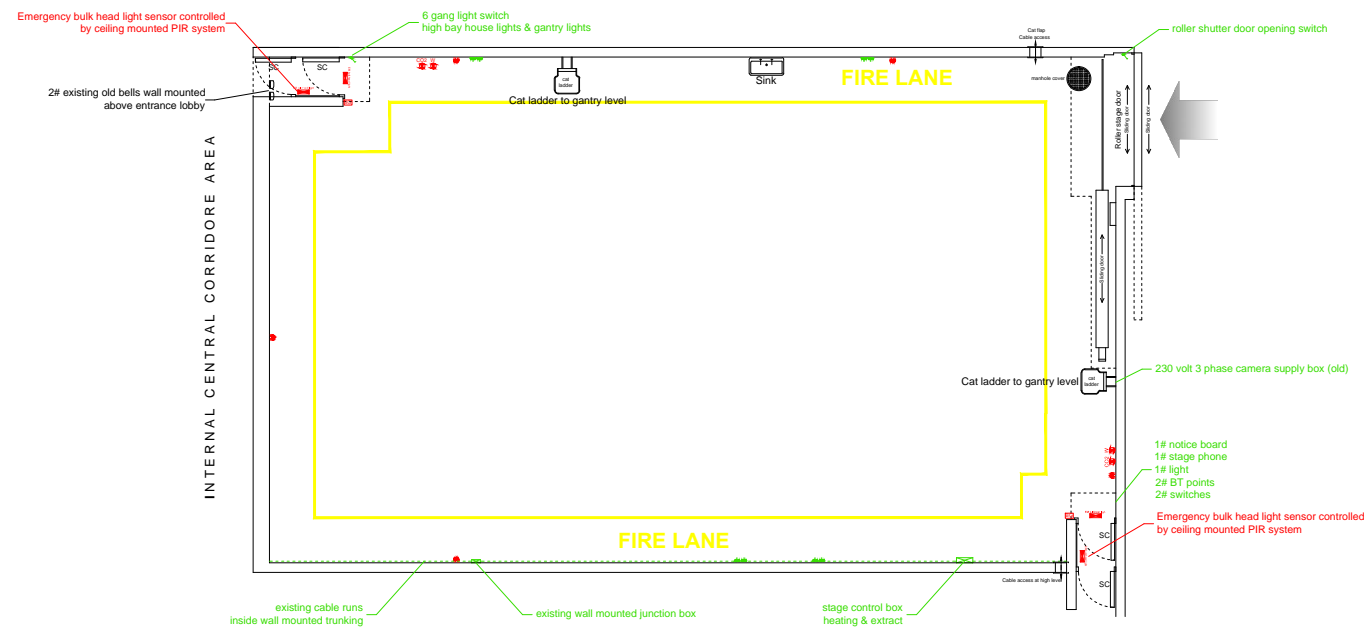
THIS DRAWING IS THE PROPERTY OF PINEWOOD GROUP LTD AND MUST NOT BE COPIED OR REPRODUCED IN WHOLE OR IN PART, BY ANY METHOD WHATSOEVER, WITHOUT PERMISSION OR THE WRITTEN AUTHORISATION OF PINEWOOD GROUP LTD

ALL DIMENSIONS TO BE CHECKED ON SITE PRIOR TO ANY COMMENCEMENT OF WORKS



SHEPPERTON STUDIOS SITE PLAN

LEGEND:	
—	ELECTRICAL
—	EXISTING SINGLE GANG LIGHT SWITCH
—	EXISTING DOUBLE GANG LIGHT SWITCH
—	EXISTING DOUBLE POWER SOCKET OUTLET
—	EXISTING SINGLE POWER SOCKET
—	FIRE DETECTION
—	EXISTING SMOKE DETECTOR
—	EXISTING BREAK GLASS CALL POINT
—	EXISTING FIRE ALARM BELL (A&D)
—	EXISTING EMERGENCY BULKHEAD LIGHT
—	EXISTING DIRECTIONAL ILLUMINATED EMERGENCY EXIT LIGHT
—	EXISTING DIRECTIONAL LUMINOUS RUNNING SIGN SIGNAGE
—	EXISTING CO2 FIRE EXTINGUISHER
—	EXISTING WATER FIRE EXTINGUISHER
—	EXISTING FIRE HOSE REEL
—	EXISTING EMERGENCY LIGHT TEST SWITCH
—	EXISTING SMOKE DETECTOR ISOLATOR
LIGHTING:	
—	EXISTING WALL MOUNTED HOUSE LIGHT
—	EXISTING CIRCULAR BULKHEAD LIGHT WITH EMERGENCY PACK
—	EXISTING CIRCULAR BULKHEAD LIGHT
—	EXISTING CIRCULAR WALL MOUNTED LIGHT WITH EMERGENCY PACK
—	EXISTING WALL MOUNTED LIGHT
—	EXISTING HIGH BAY STAGE LIGHTING
—	EXISTING HIGH BAY STAGE LIGHT ATTACHED TO GANTRY HANDRAIL
—	EXISTING GANTRY HOUSE LIGHTING 1000MM DOUBLE FLUORESCENT STRIP LIGHT
GANTRY LEVEL:	
—	MAIN STRUCTURAL BEAMS @ APPROX 200MM WIDE
—	RUNWAY BEAMS @ 100MM WIDE
—	TRANSFER SYSTEM LOCATION
—	GANTRY WALKWAY



E STAGE | EXISTING GROUND FLOOR SHEPPERTON STUDIOS



E STAGE DIMENSIONS	
STAGE LENGTH	= 73' 4" [22.4m]
STAGE WIDTH	= 43' 6" [13.3m]
GROUND FLOOR AREA	= 3,206 ft² [297.9m²]
HEIGHT OF STAGE	= 7m

PROJECT MANAGEMENT DEPARTMENT

PROJECT
SHEPPERTON STUDIOS
E STAGE

DRAWING TITLE
EXISTING GROUND FLOOR

SCALE 1:200 @ A3	DATE 01-10-13	DRAWN BY SDM
---------------------	------------------	-----------------

