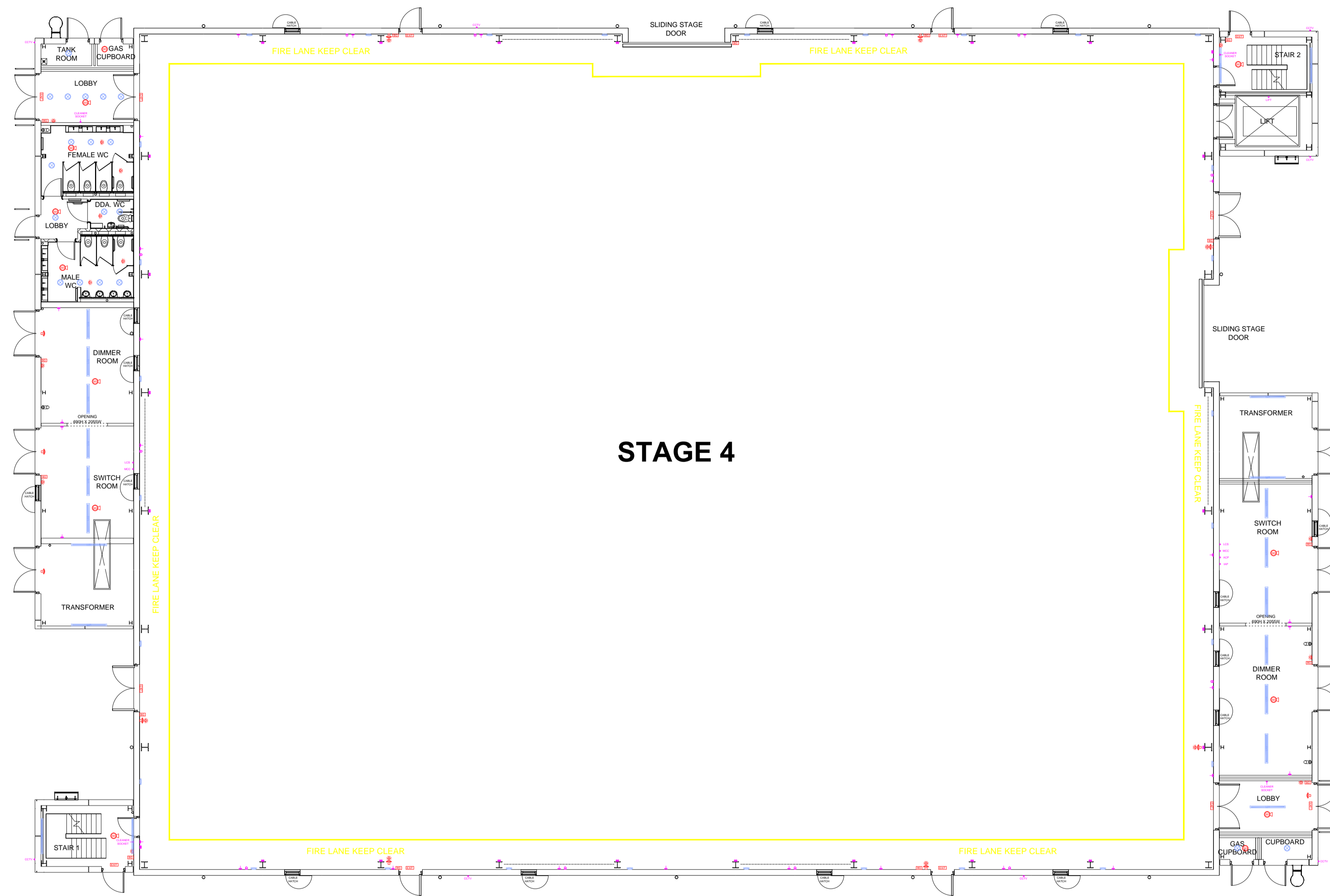


KEY:

	SURFACE MOUNTED SINGLE TUBE LIGHT FITTING
	SURFACE MOUNTED TWIN TUBE LIGHT FITTING
	LOW LEVEL HANGING SINGLE TUBE LIGHT FITTING
	LOW LEVEL HANGING TWIN TUBE LIGHT FITTING
	HIGH LEVEL HANGING TWIN TUBE LIGHT FITTING
	HIGH BAY LED STAGE LIGHTING
	HIGH BAY LIGHT LED
	SURFACE MOUNTED CEILING LIGHT
	SURFACE MOUNTED WALL LIGHT
	LOW VOLTAGE DOWNLIGHTER
	RECESSED CIRCULAR LIGHT
	SEMI CIRCULAR WALL WASH UP LIGHTER
	EXISTING RADIATORS
	SINGLE POWER SOCKET
	DOUBLE POWER SOCKET
	LIGHT SWITCH
	SINGLE DATA SOCKET
	DOUBLE DATA SOCKET
	CLEAN SUPPLY POWER SOCKET (SWITCH/SOCKET)
	VERTICAL FLOOR TO CEILING CABLE TRUNKING
	CABLE TRUNKING AT FLOOR LEVEL
	FIRE ALARM SOUNDER
	FIRE ALARM BEACON (FLASH)
	WATER FIRE EXTINGUISHER
	CARBON DIOXIDE FIRE EXTINGUISHER
	BREAK GLASS FIRE ALARM CALL POINT
	BREAK GLASS EMERGENCY DOOR RELEASE
	PUSH BUTTON DOOR RELEASE
	SMOKE DETECTOR CEILING MOUNTED
	SMOKE DETECTOR CEILING MOUNTED FITTED WITH AUDIBLE WARNING DEVICE (BUZZER)
	EMERGENCY LIGHT FITTING
	EMERGENCY LIGHT FITTING
	ILLUMINATED DIRECTIONAL FIRE EXIT SIGN
	ILLUMINATED FIRE EXIT SIGN
	PRE-LIGHT SWITCH
	VISION PANEL IN DOOR
	SELF CLOSER TO DOOR



STAGE 4

**STAGE 4 | EXISTING GROUND FLOOR
 PINWOOD STUDIOS**

STAGE 4 DIMENSIONS		
STAGE LENGTH	= 178'	[54.5m]
STAGE WIDTH	= 139'	[42.4m]
GROUND FLOOR AREA	= 24,742 R ²	[2310m ²]
FFL TO LOWER GANTRY LEVEL	= 42'	[12.827m]
FFL TO UPPER GANTRY LEVEL	= 51'	[15.615m]

**PROJECT
 MANAGEMENT
 DEPARTMENT**

PROJECT
 PINWOOD STUDIOS
 STAGE 4

DRAWING TITLE
 EXISTING GROUND FLOOR PLAN

SCALE	DATE	DRAWN BY
1:150 @ A1	03-05-16	SRM

