



**W STAGE**  
**SPECIFICATION SHEET**

**DIMENSIONS**

	Feet	Metres
Length	80	39.62
Width	130	24.38
Height (To grid)	34	10.49
Stage Size	10,400	966sq.m

**TANK**

	Feet	Metres
Length	N/A	N/A
Width	N/A	N/A
Depth	N/A	N/A
	Gallons	Litres
Water Capacity	N/A	N/A
Filling Time	N/A	
Emptying Time	N/A	

**CHAINS, TACKLES BEAMS**

Runway Beams	7ftx4ft	18cmx10cm
Chains Tackles & Trolleys	30	
Weight Loading (Per tackle)	500kg (1102.30 lbs)	
Weight Loading (Runway Beams)	500kg 6' centres (1,102.30lbs 1.83m centres)	

**STAGE DOORS**

	No. Of		Dimensions
Large Stage Doors	x2	1)	14.11ftx18.7ft
			4.30mx5.62m
pedestrian entrance doors	5		14.9ftx18.7ft
			4.54mx5.69m

**FIRE PROTECTION**

Stage covered by Beam Detection	✓
Red Fire Hydrant	x
Blue Fire Hydrant (Drinking water)	x
Sprinklers	x
fire Reels	✓

**FIRE EXTINGUISHERS**

	Floor	Gantry
Water	2	0
Co2	2	2
Foam	4	0

**FLOOR CONSTRUCTION**

Floor	Concrete
-------	----------

**AIR LINES**

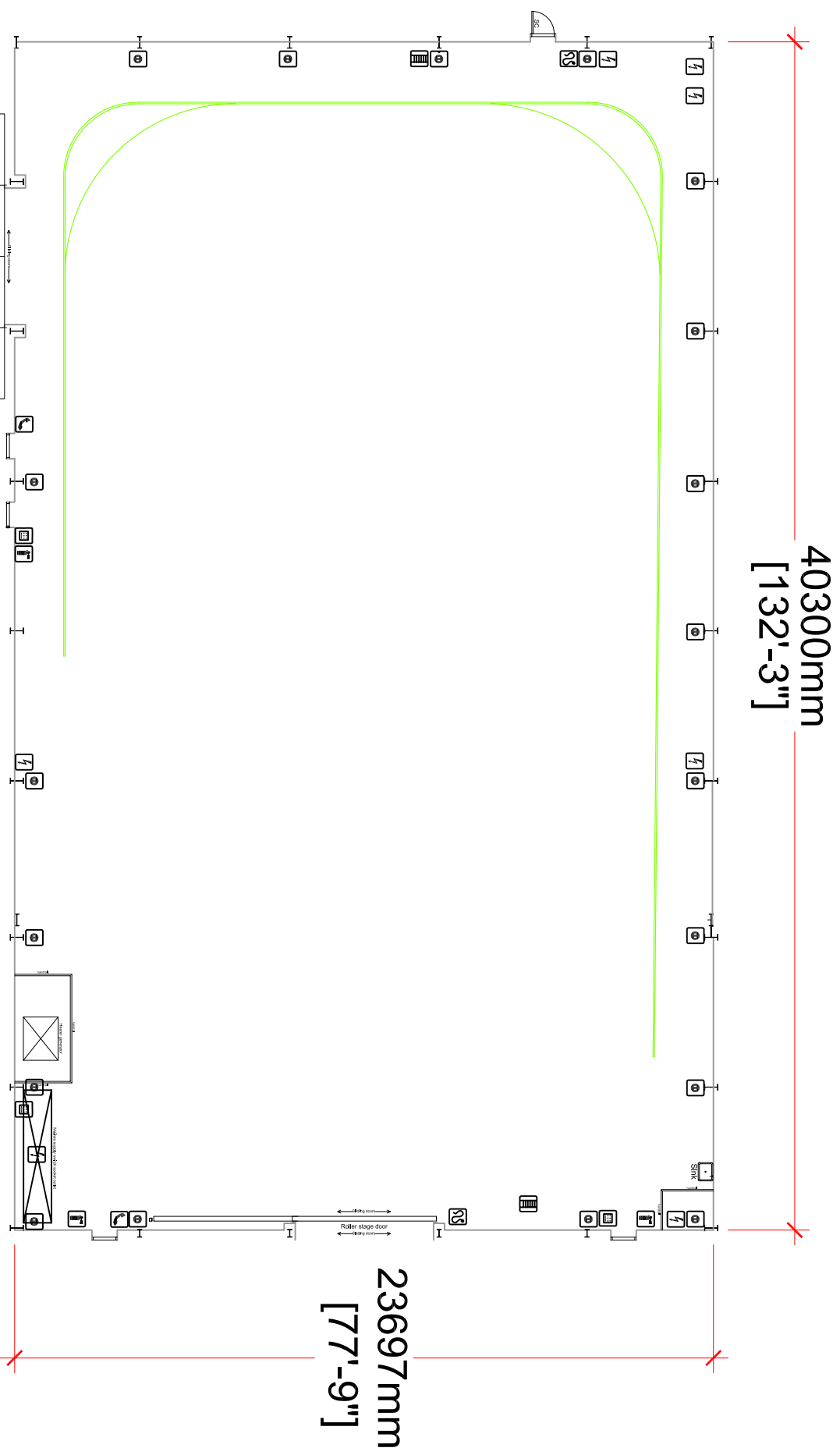
x

**AIR OUTLETS**

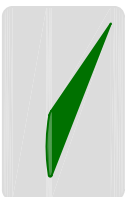
0

**ELECTRICAL SUPPLY**

Maximum Electrical Load	1200 amps per phase
Additional Power Cable Access	x
Number of 13 Amp Sockets	22



**SHEPPERTON**



**STUDIOS**

W STAGE	Scale: 1:200 A3
L 132' x W 77' x H 34'	
L 40.3m x W 23.6m x H 10m	
Fire Extinguisher	
Electrical Supply Point	
Red Fire Hydrant	
Blue Fire Hydrant (Drinking Water)	
Mains Power	
Ladder	
Phone	
Electrical (Lights, Sound, Vents)	
Fire Hose	
Air Lines	